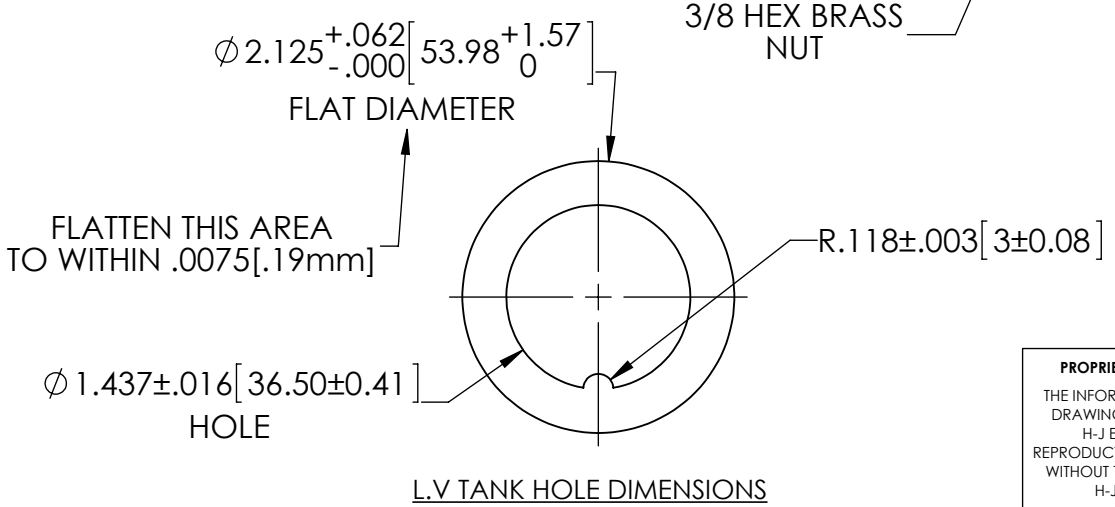
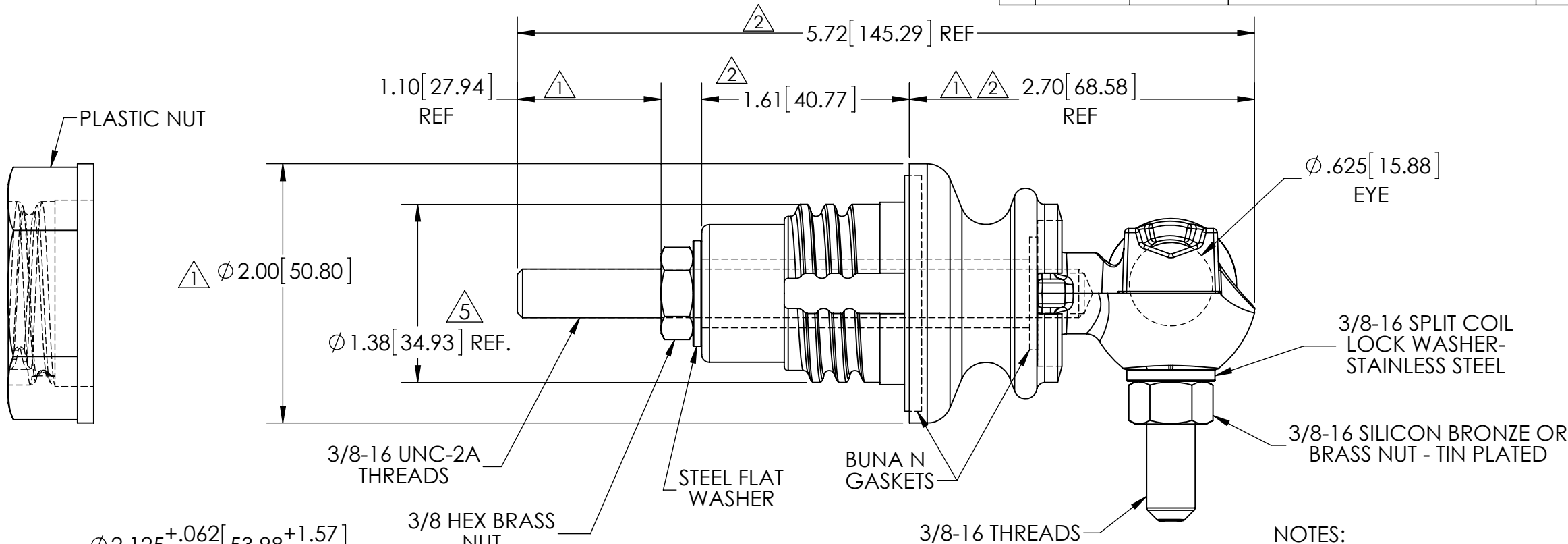


REVISIONS					
REV.	DATE	ECN #	DESCRIPTION	BY	APPROVED
1	12/7/98		CHANGED DIMENSIONS	CJT	LHE
2	11/9/99		REDREW CAP AND EDITED DIMENSIONS	CJT	LHE
3	1/8/02	HJ01-231	REMOVED TORQUE NOTE	CJT	LHE
4	12/21/2011		RE-DRAWN	EDS	
5	12/29/2014	HJ14-269	Ø 1.38 REF. WAS Ø 1.39	CLS	BLB



NOTES:
1. INCLUDES TWO EXTRA BRASS NUTS.

MATERIAL:
STUD - COPPER CDA 11000
BODY - CDA 84400 TIN PLATED
EYEBOLT - CDA 95500 TIN PLATED

PROPRIETARY AND CONFIDENTIAL
THE INFORMATION CONTAINED IN THIS DRAWING IS THE SOLE PROPERTY OF H-J ENTERPRISES, INC. ANY REPRODUCTION IN PART OR AS A WHOLE WITHOUT THE WRITTEN PERMISSION OF H-J ENTERPRISES, INC. IS PROHIBITED.

TOLERANCES (EXCEPT AS NOTED)	
DECIMAL	+/- .032"/.8mm
FRACTIONAL	+/-
ANGULAR	+/- 2 Degrees



H - J ENTERPRISES, INC.
3010 HIGH RIDGE BLVD. HIGH RIDGE, MO. 63049 USA
PHONE 1-636-677-3421 FAX 1-636-376-1915

**15 KVA L.V. BUSHING ASSEMBLY
NON-PORCELAIN INSULATOR**

MATERIAL (SEE NOTES)		DRAWING NO.	
CHK'D	APP'D	AS1000-002	
SCALE N.T.S.		DRAWN BY	DATE
		TLH	4-22-96